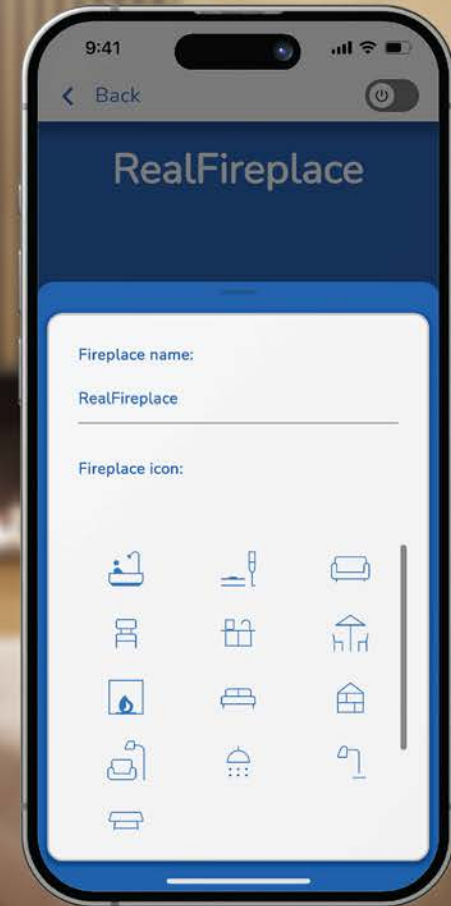
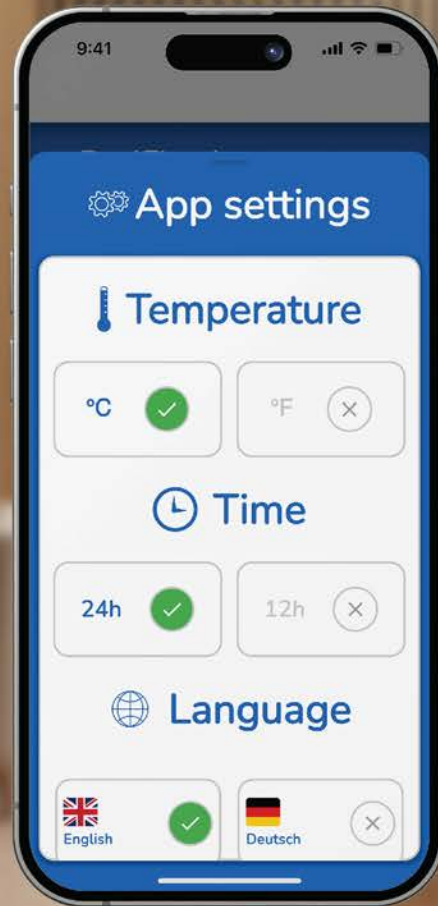
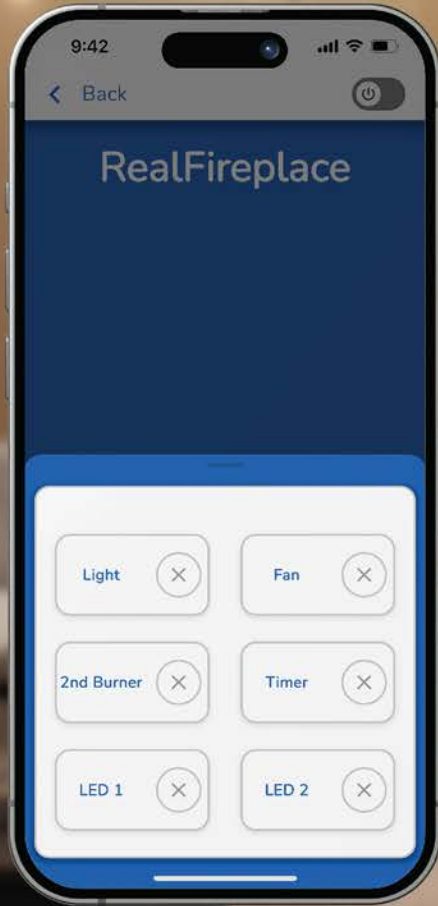


Valor[®] 10 – Initial App Set-up



DOWNLOAD THE VALOR10 APP

To download the myfire app search for “Valor10” at the Apple App Store or at Google Play.



For more information go to:
www.valorfireplaces.com



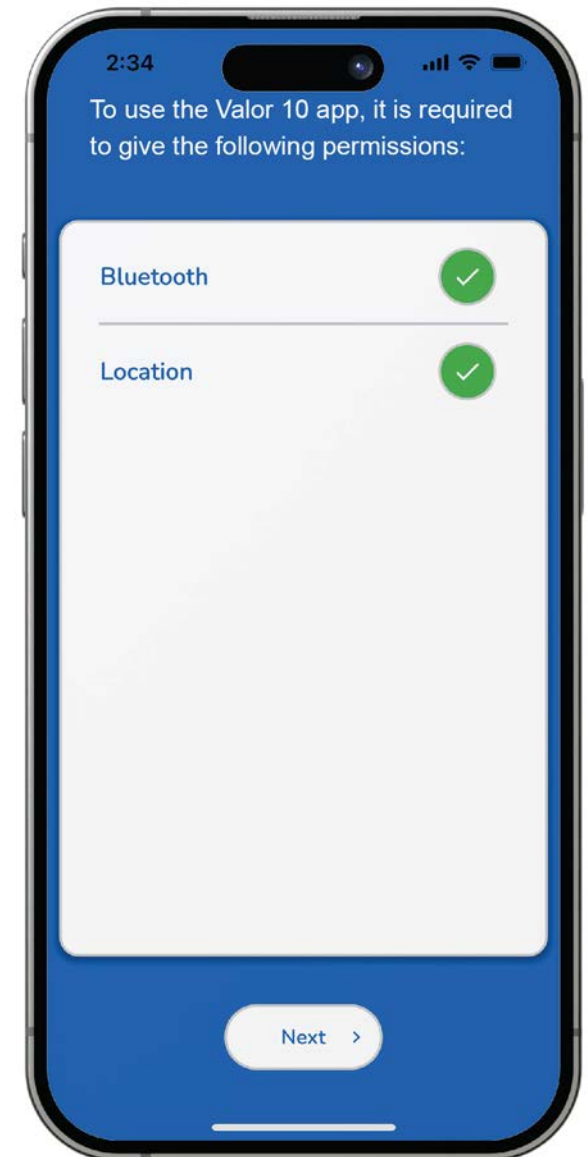
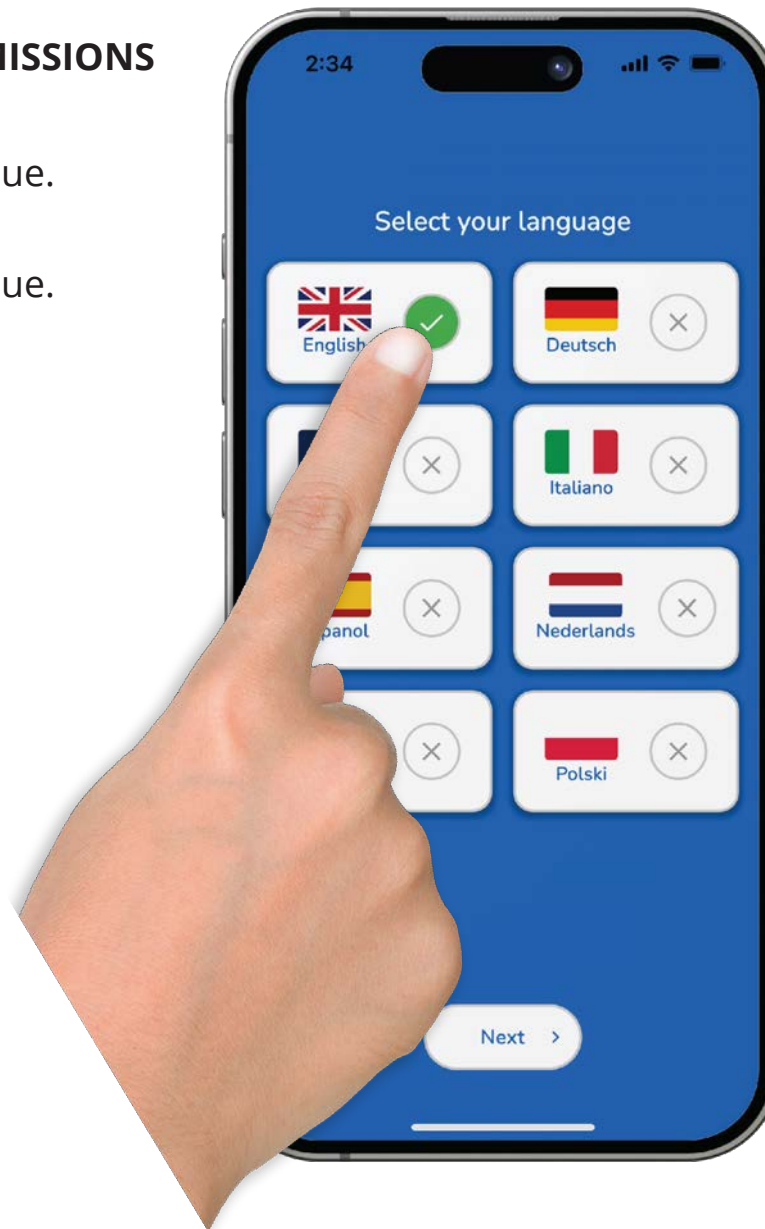
WI-FI

Make sure your Home network Wi-Fi is connected with your smart device **BEFORE** opening the myfire app.



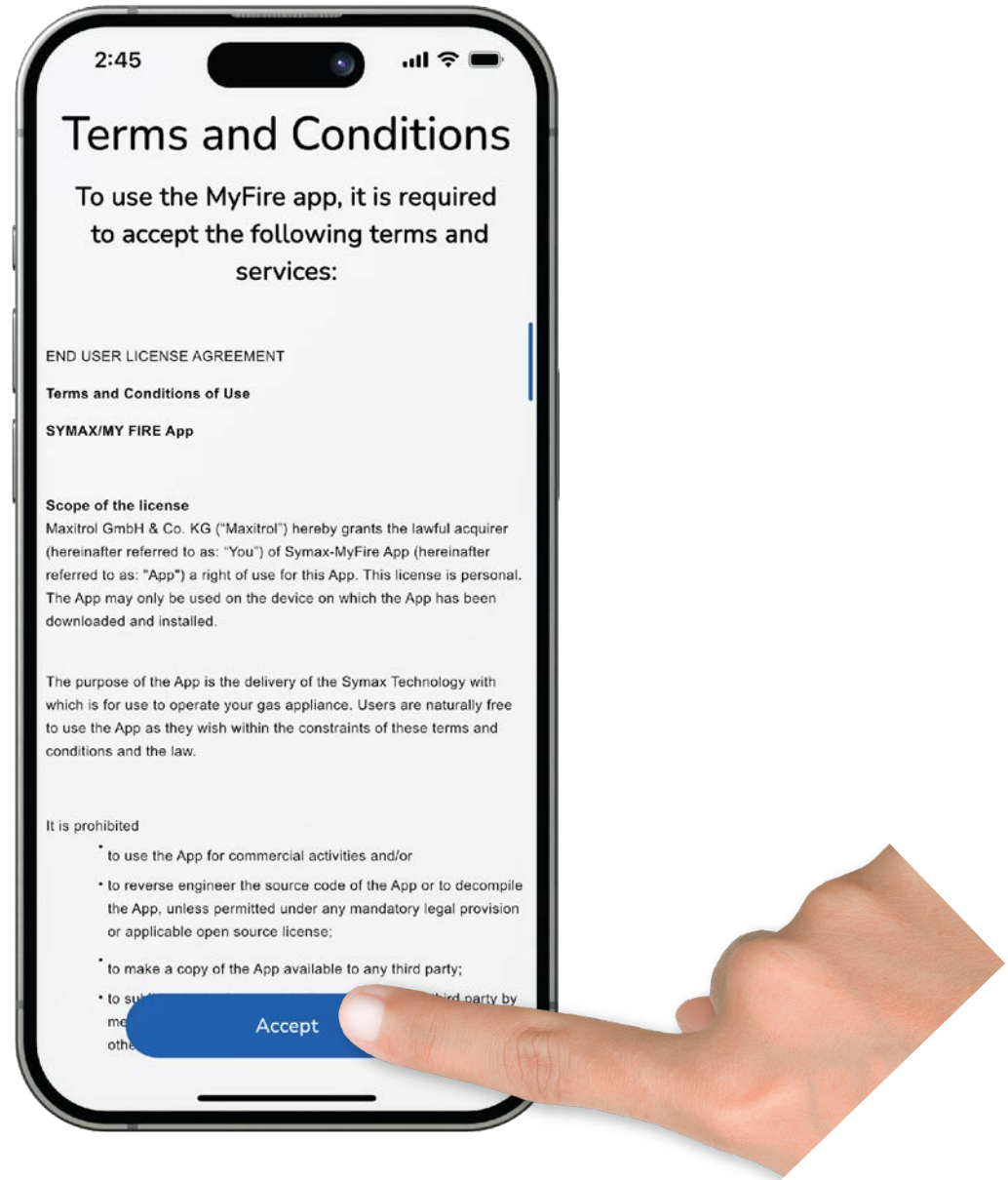
CHOOSE LANGUAGE AND PERMISSIONS

1. Choose language.
2. Touch **“Next”** button to continue.
3. Choose Permissions.
4. Touch **“Next”** button to continue.



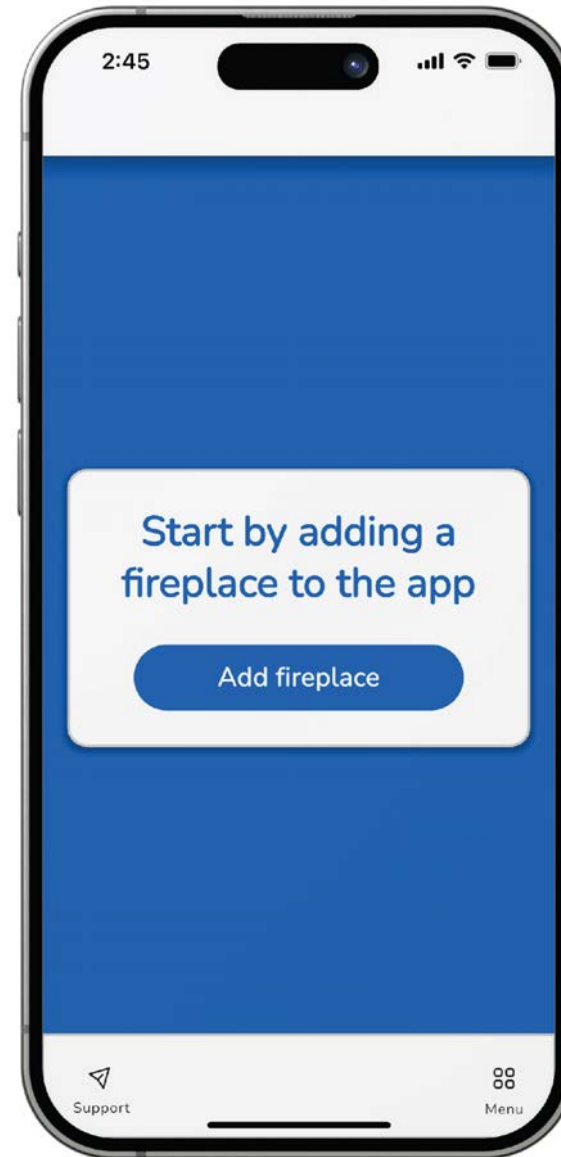
TERMS AND CONDITIONS

1. Read terms and conditions.
2. Touch **“Accept”** button to continue.



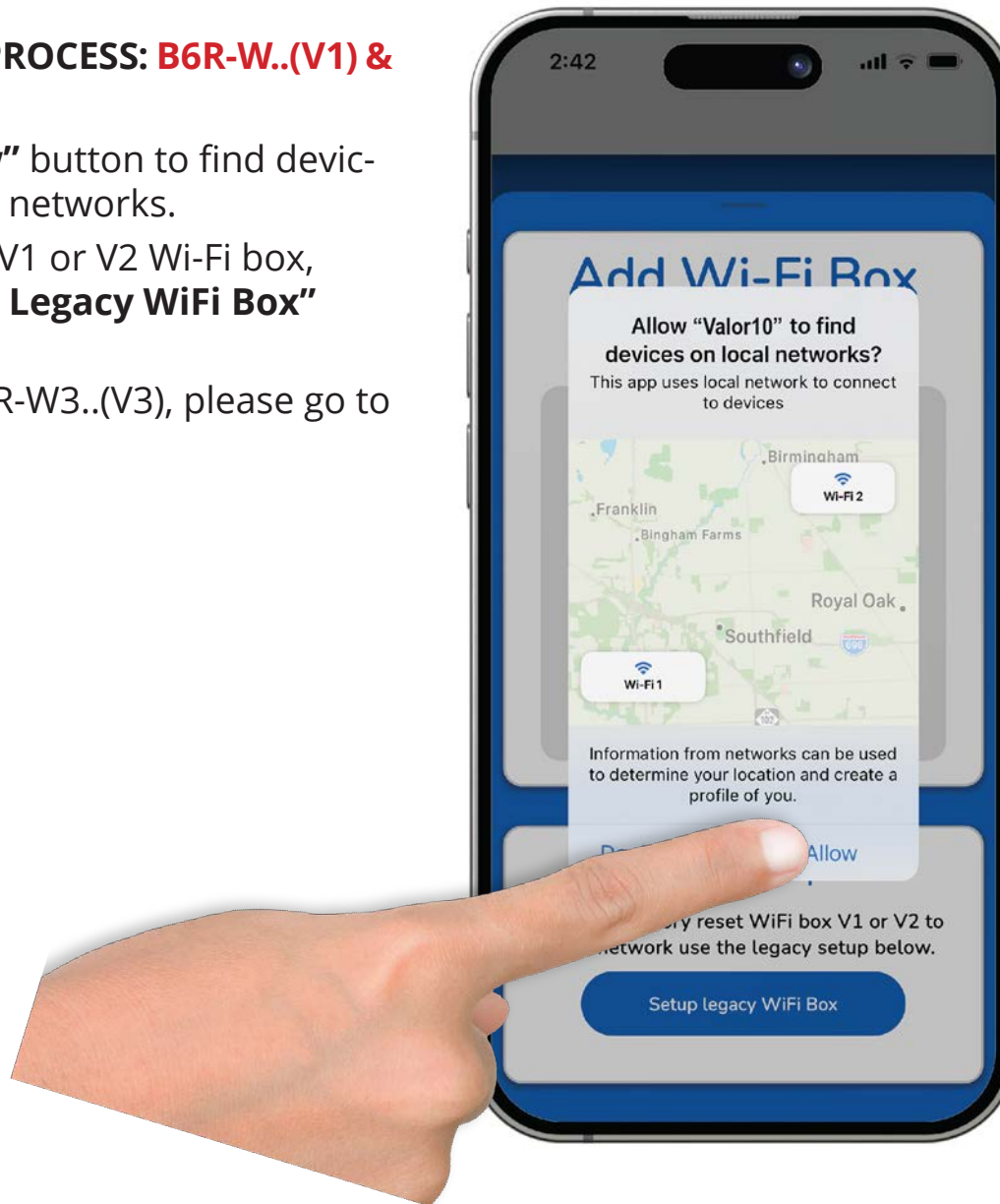
ADD FIREPLACE

Touch **“Add fireplace”** button to continue.



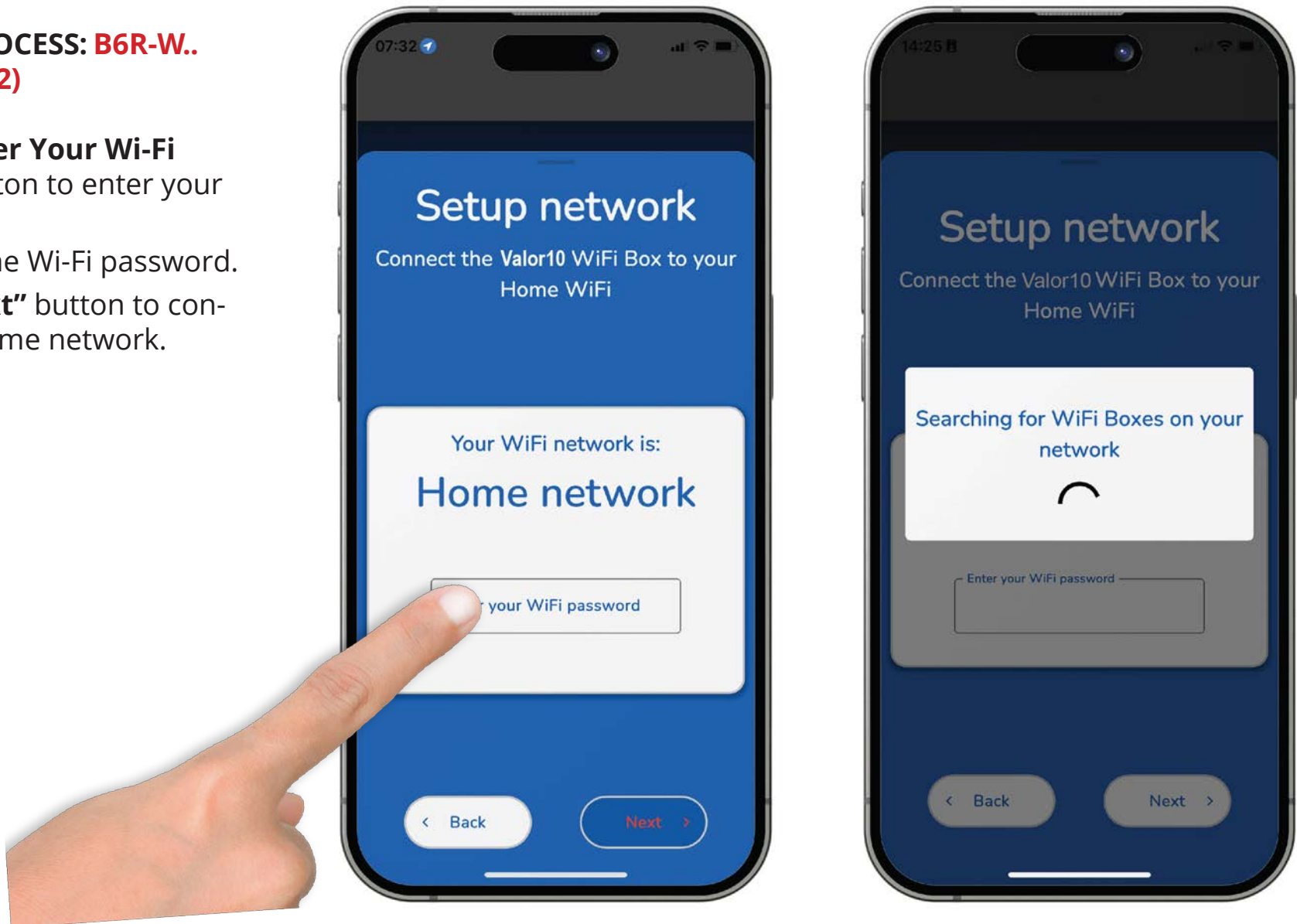
CONNECTING PROCESS: B6R-W..(V1) & B6R-W2..(V2)

1. Touch **“Allow”** button to find devices on local networks.
2. If you have a V1 or V2 Wi-Fi box, touch **“Setup Legacy WiFi Box”** button.
3. **Note:** For B6R-W3..(V3), please go to page 12.



CONNECTING PROCESS: B6R-W.. (V1) & B6R-W2..(V2)

1. Touch the **“Enter Your Wi-Fi Password”** button to enter your Wi-Fi password.
2. Enter your Home Wi-Fi password.
3. Touch the **“Next”** button to connect to your Home network.



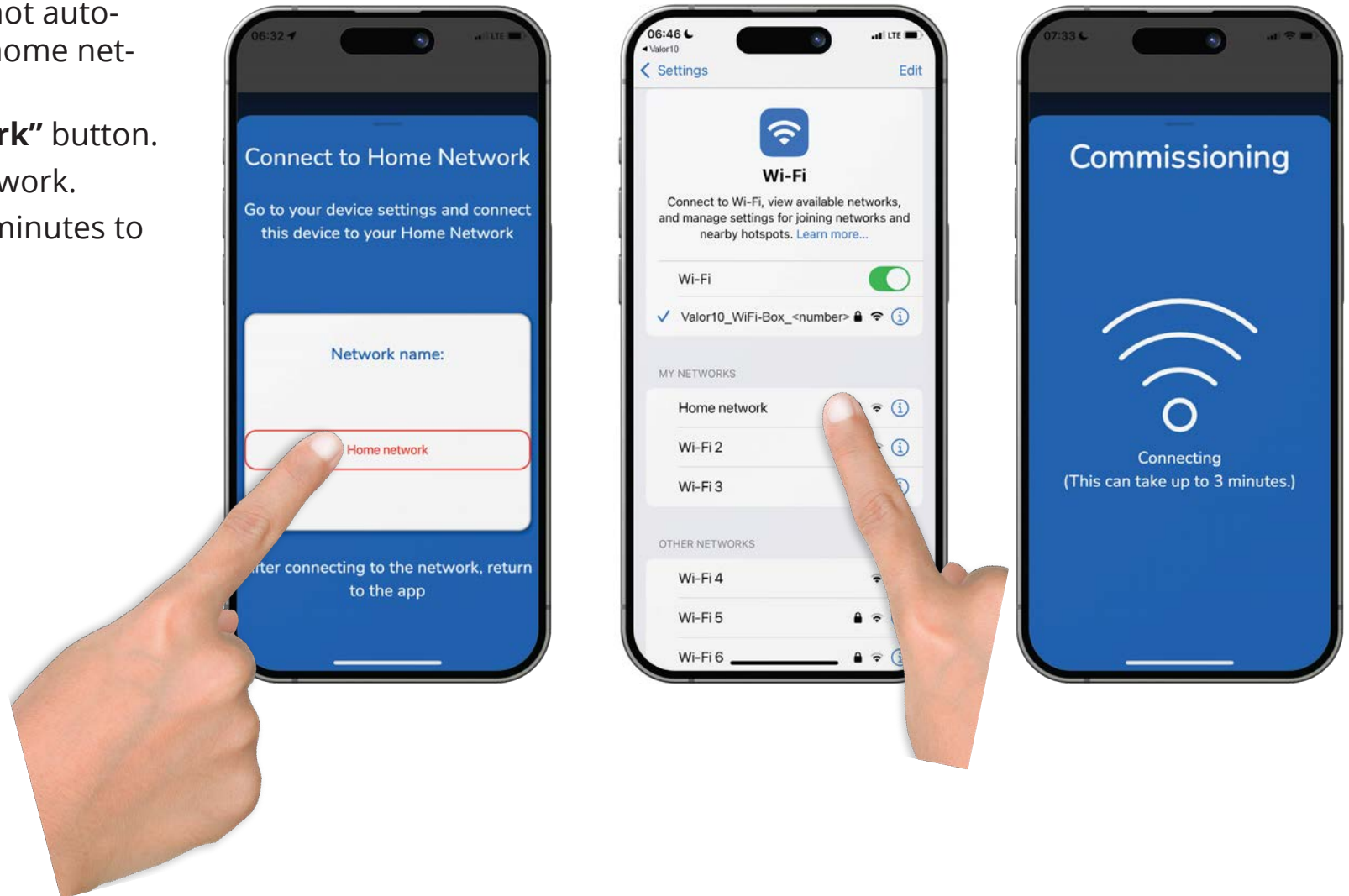
CONNECTING PROCESS: B6R-W.. (V1) & B6R-W2..(V2)

1. Leave the app and go to the Wi-Fi settings on your phone.
2. Connect to the Wi-Fi Box. Network name: "myfire_WiFi-Box_<number>
Password: MYFIREPLACE
3. Once you are connected to the Wi-Fi, go back to the myFire app.
4. **Note:** Connecting to the Wi-Fi could take up to 3 minutes.



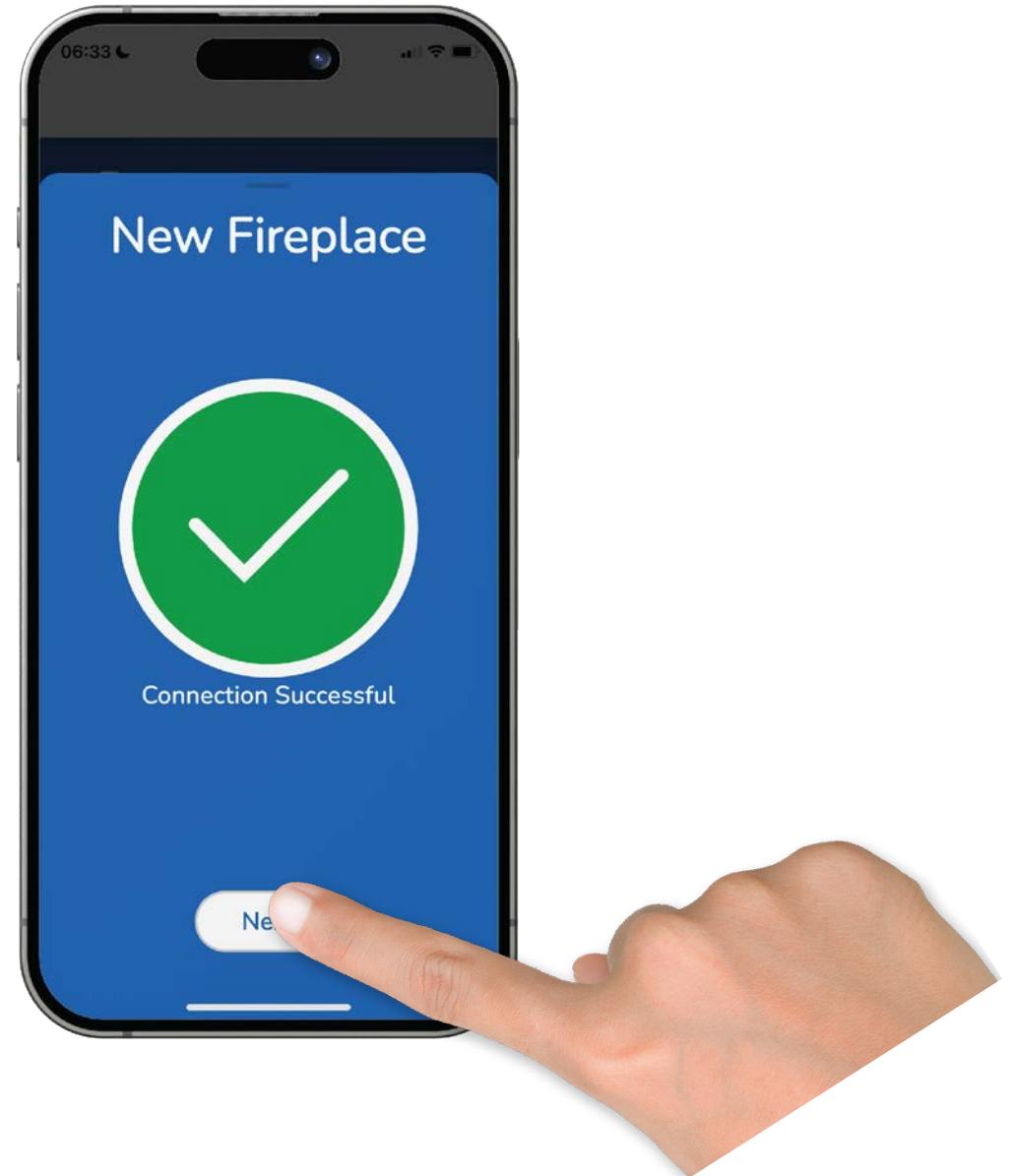
CONNECTING PROCESS: B6R-W..(V1) & B6R-W2..(V2)

1. If the smart device does not automatically connect to the home network:
2. Touch the **“Home network”** button.
3. Connect to the Home network.
4. **NOTE:** It may take a few minutes to connect.



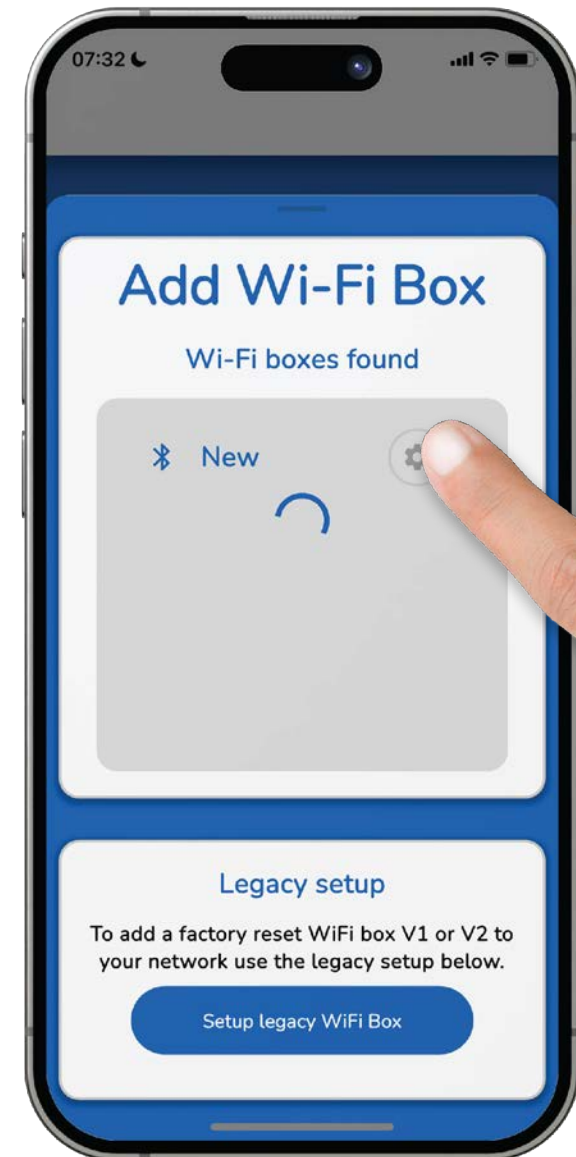
CONNECTED: B6R-W..(V1) & B6R-W2..(V2)

1. Once your connection is successful, touch the **“Next”** button.
2. **NOTE:** To continue setup, go to page 14.



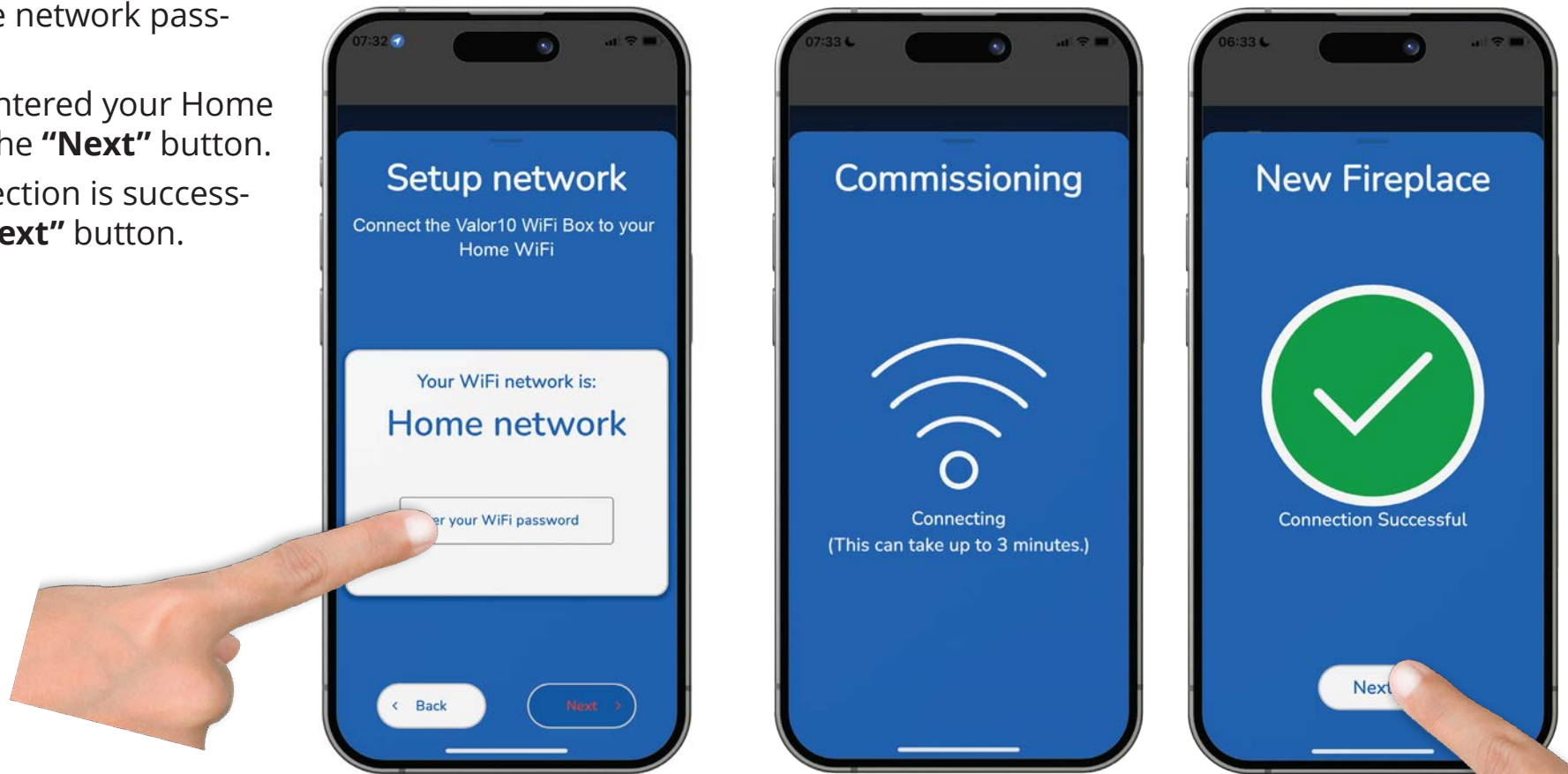
CONNECTING PROCESS: B6R-W3.. (V3)

1. Touch **“Allow”** button to find devices on local networks.
2. Touch the **“⚙️”** button to connect to the fireplace if you have a V3 Wi-Fi box.



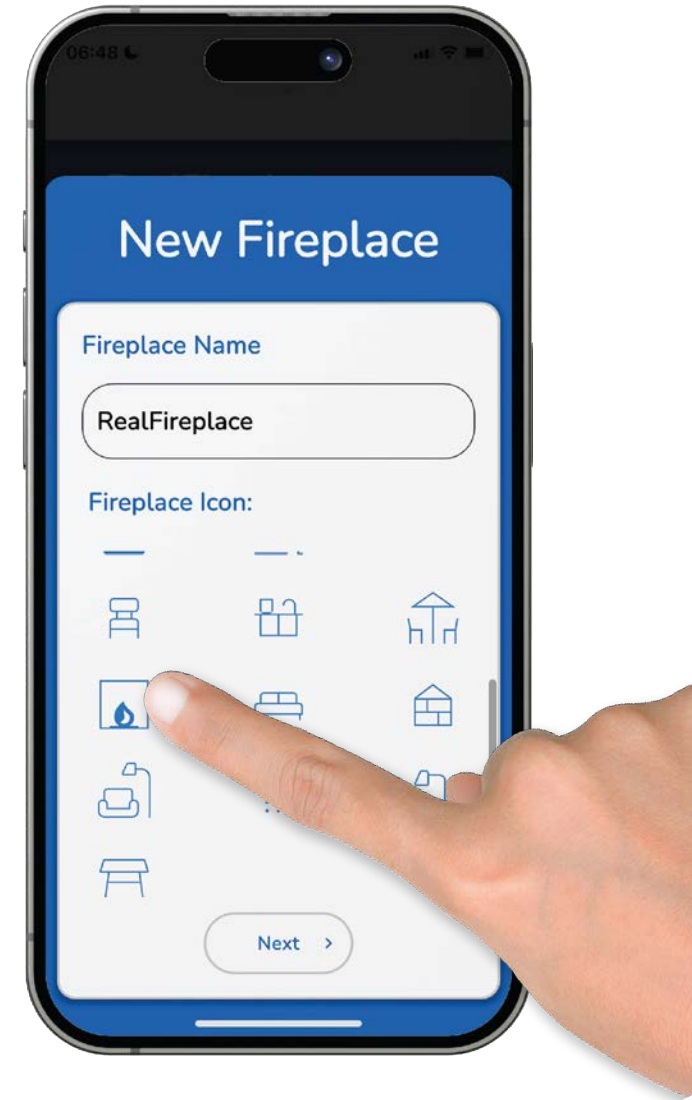
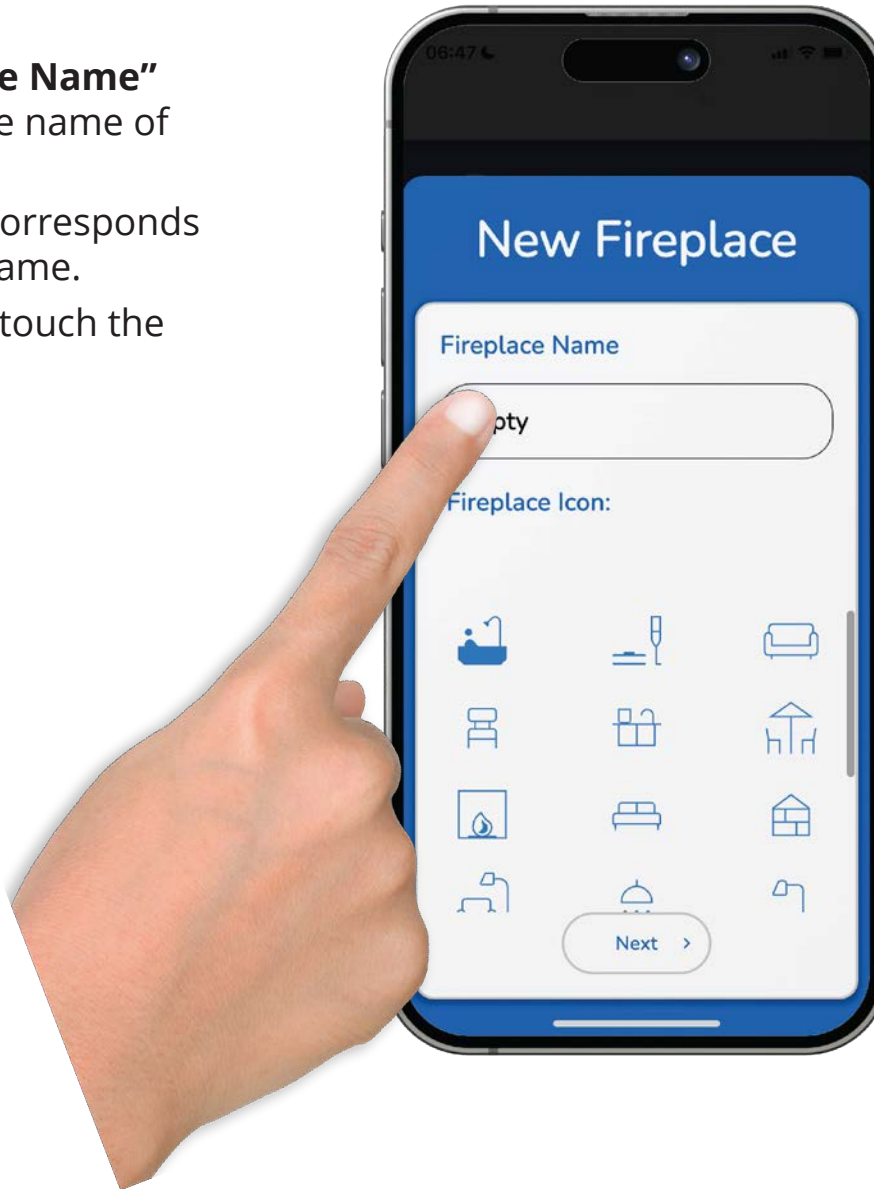
CONNECTING PROCESS: **B6R-W3..(V3)**

1. Touch the “Enter your Wi-Fi password” button.
2. Enter your Home network password.
3. After you have entered your Home network, touch the “**Next**” button.
4. Once your connection is successful, touch the “**Next**” button.



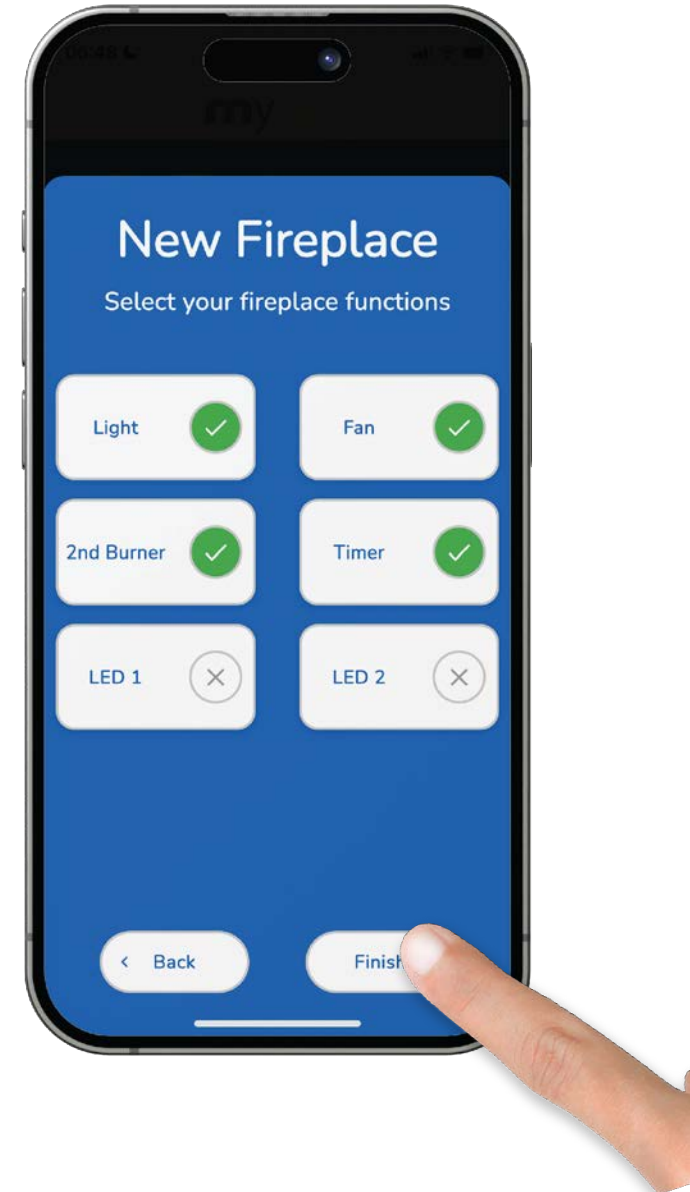
SETUP:

1. Touch the **"Fireplace Name"** button to change the name of the fireplace.
2. Touch an icon that corresponds with the Fireplace Name.
3. Once you are done, touch the **"Next"** button.



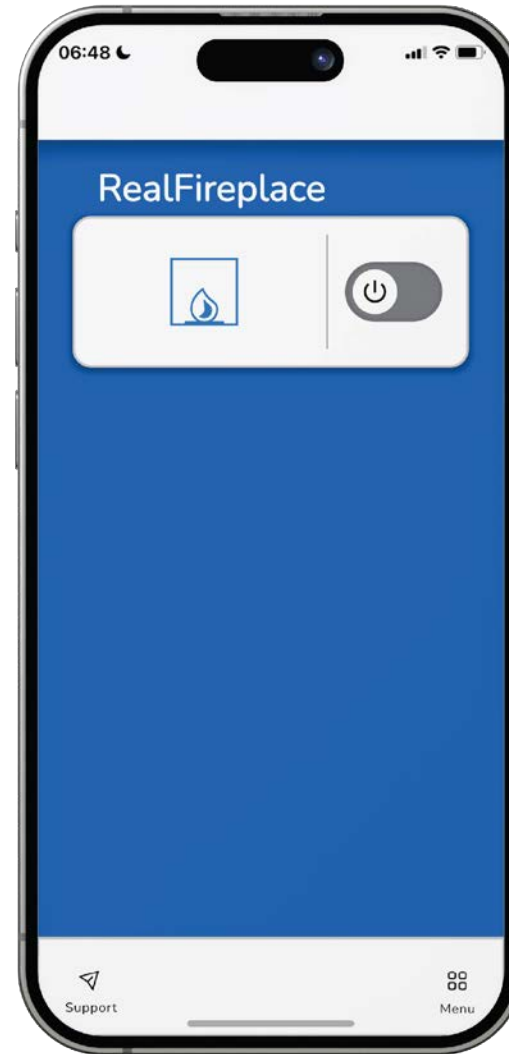
SETUP:

1. Choose the Functions that fit your fireplace.
2. Once you are done, touch the **“Finish”** button.



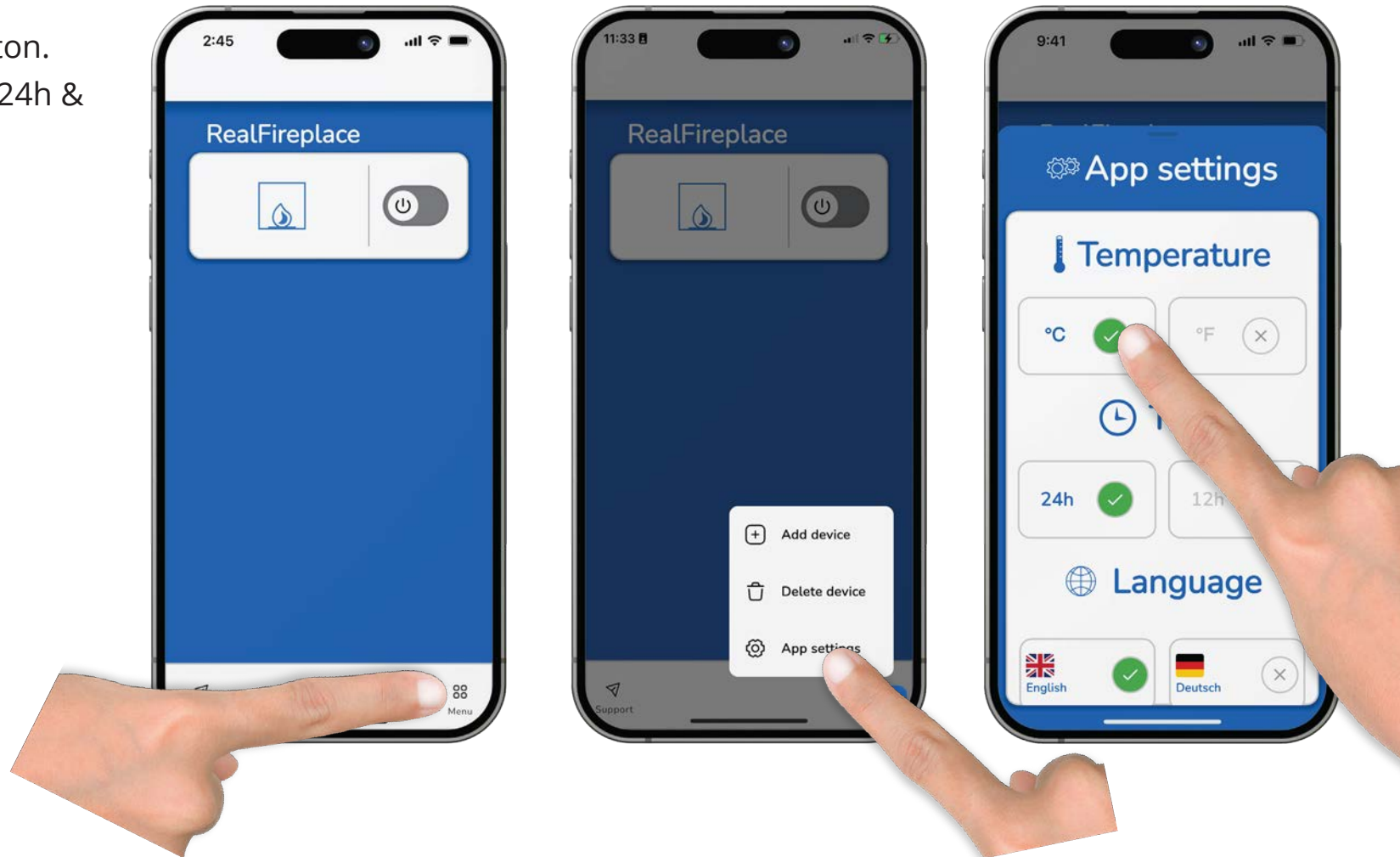
CONGRATULATIONS!

The myfire app is ready to go and the home screen is displayed.



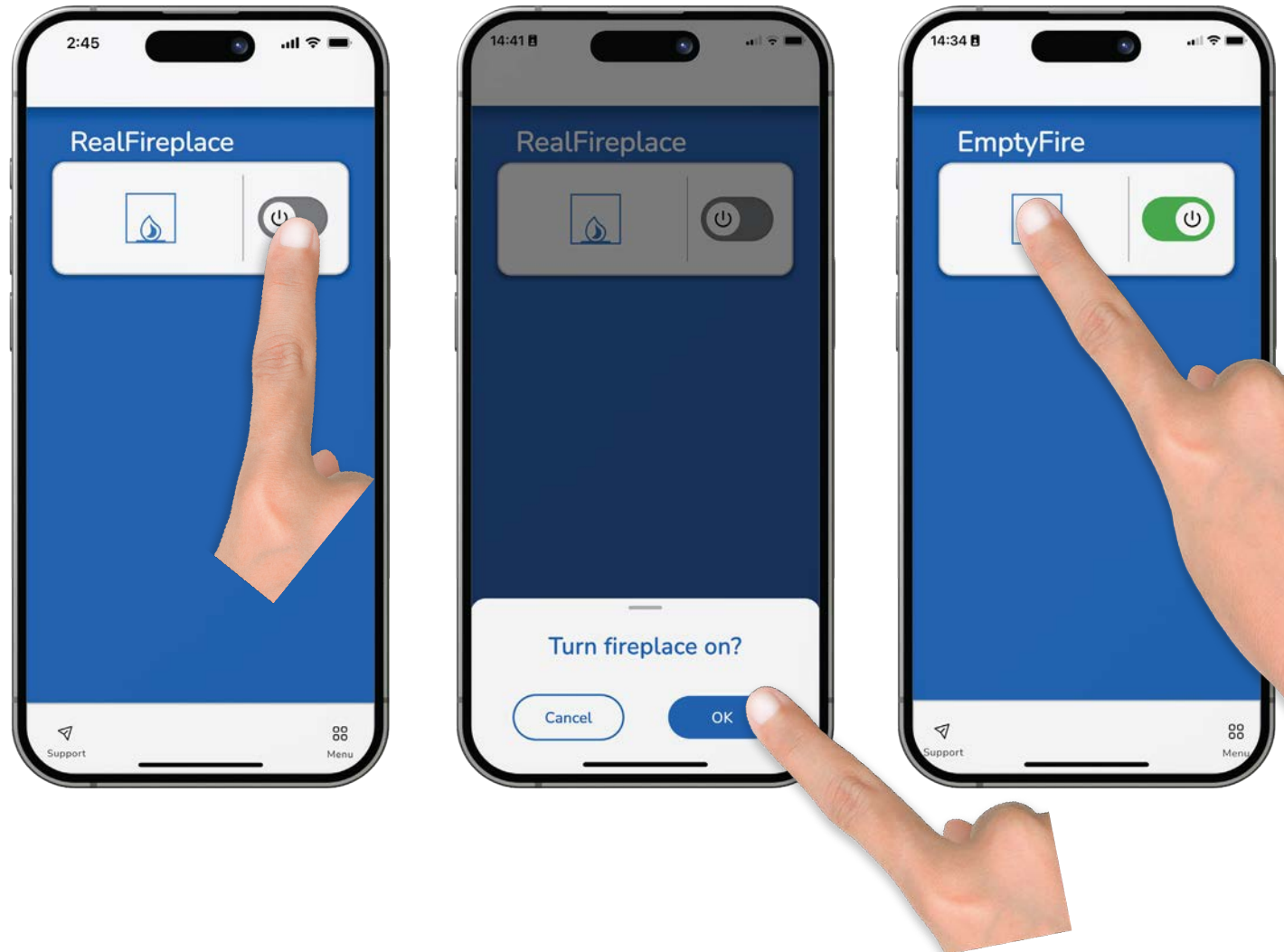
APP SETTINGS SET TEMPERATURE AND TIME:

1. Touch **“Menu”** button.
2. Touch **“App Settings”** button.
3. Can pick between C° & F°, 24h & 12h.



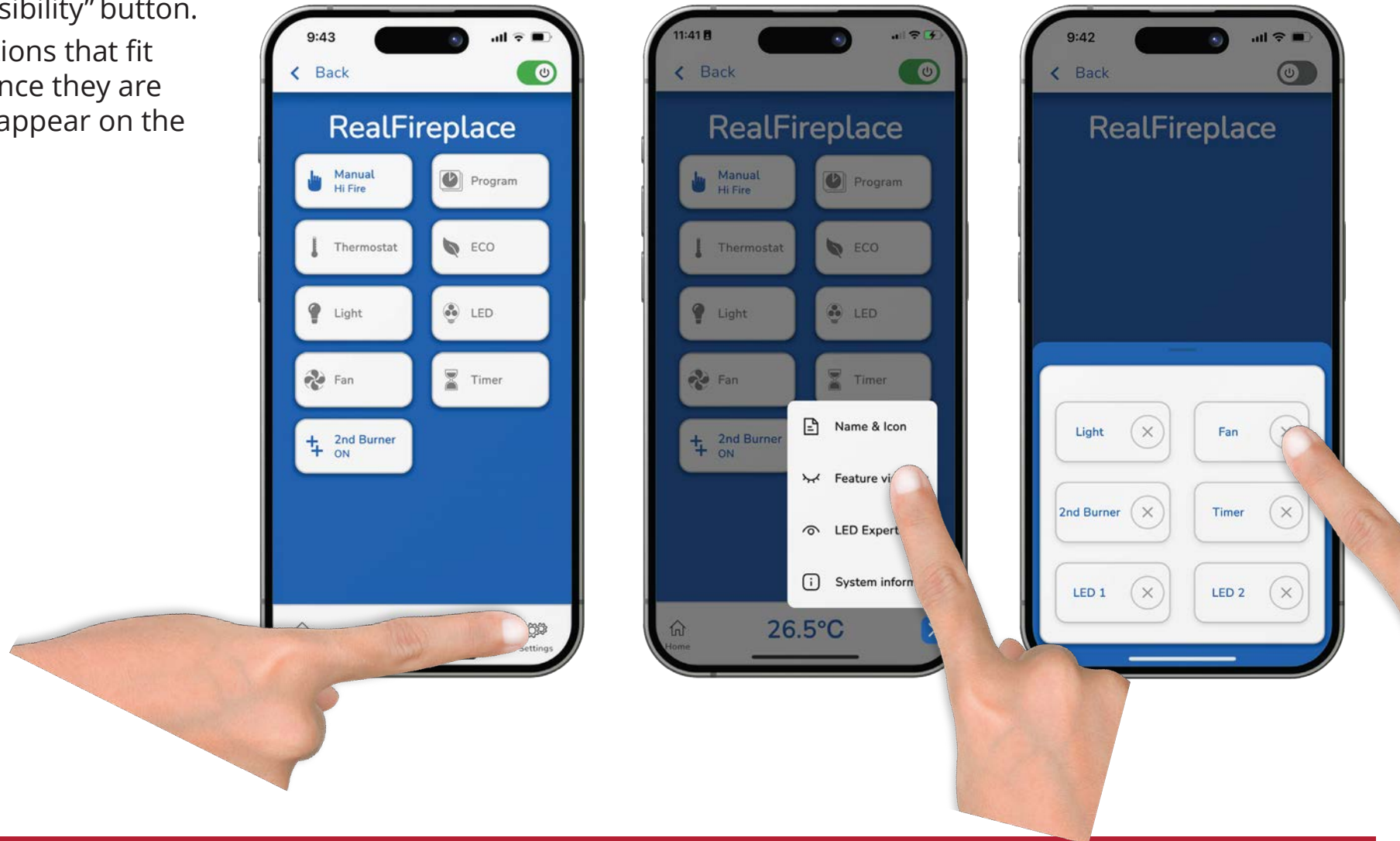
DEVICE SETTINGS:

1. Now connected to the fireplace.
2. Slide **"Power"** button to right to turn ON fireplace.
3. Push OK for ignition.
4. After successful ignition, push the icon to set features.



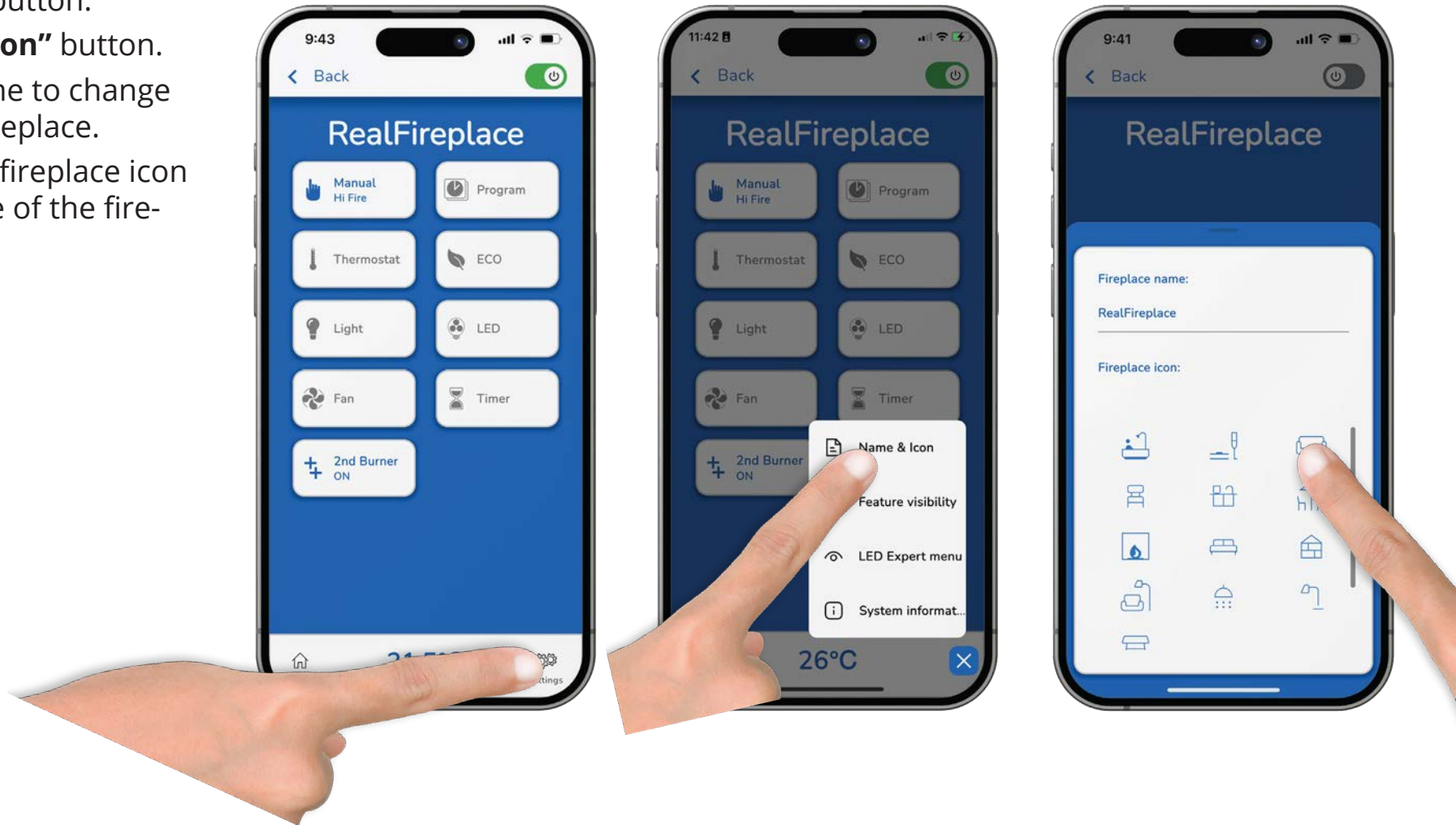
DEVICE SETTINGS SET FEATURES:

1. Touch **“Settings”** button.
2. Touch **“Feature Visibility”** button.
3. Choose the Functions that fit your fireplace. (Once they are chosen, they will appear on the home screen.)

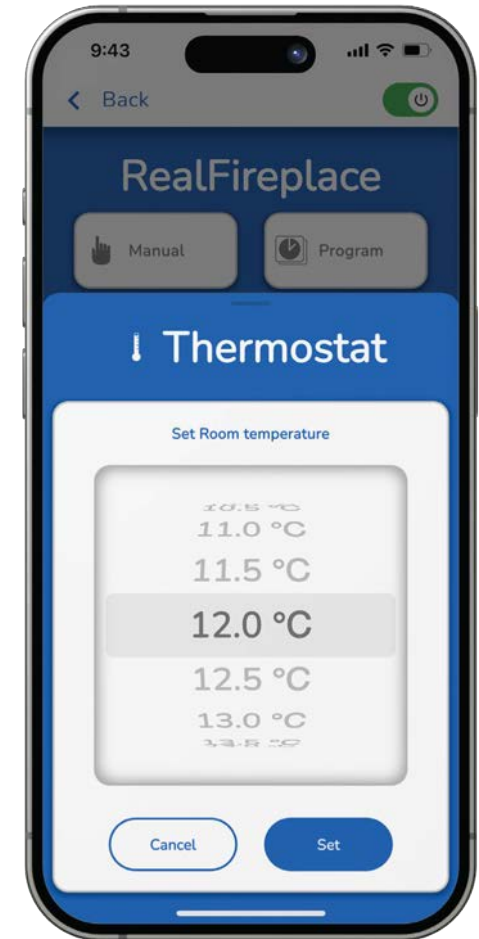
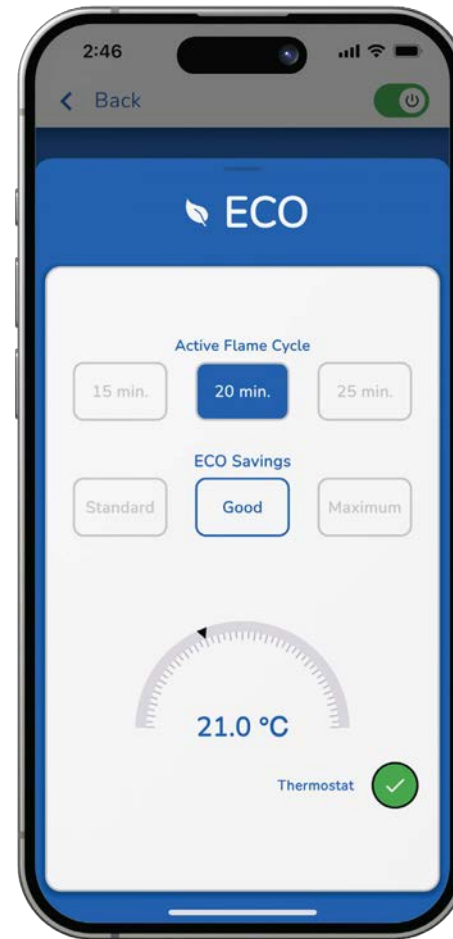
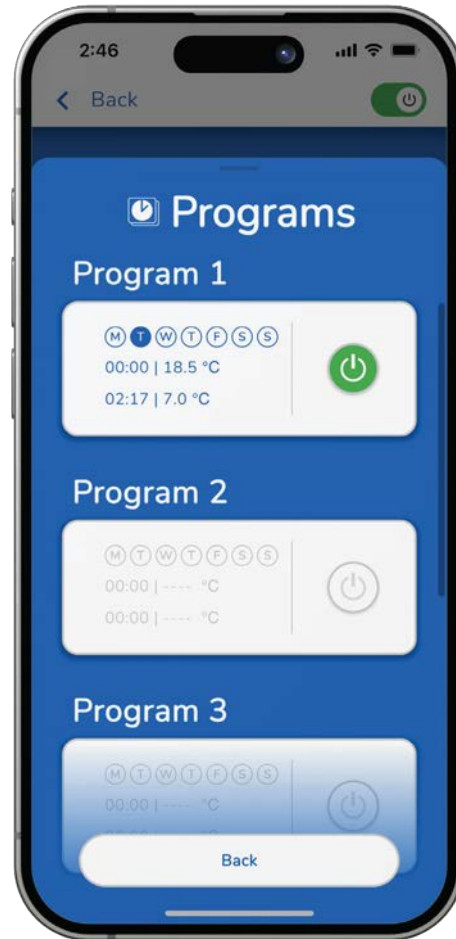
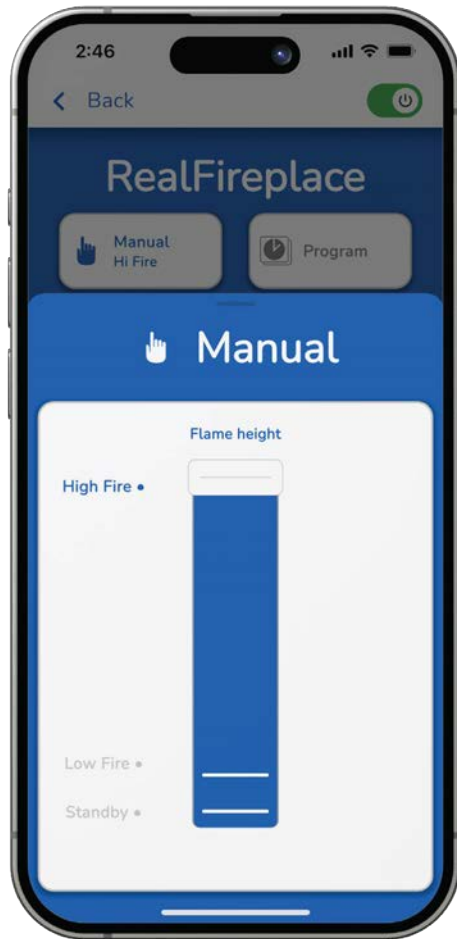


DEVICE SETTINGS SET NAME AND ICONS:

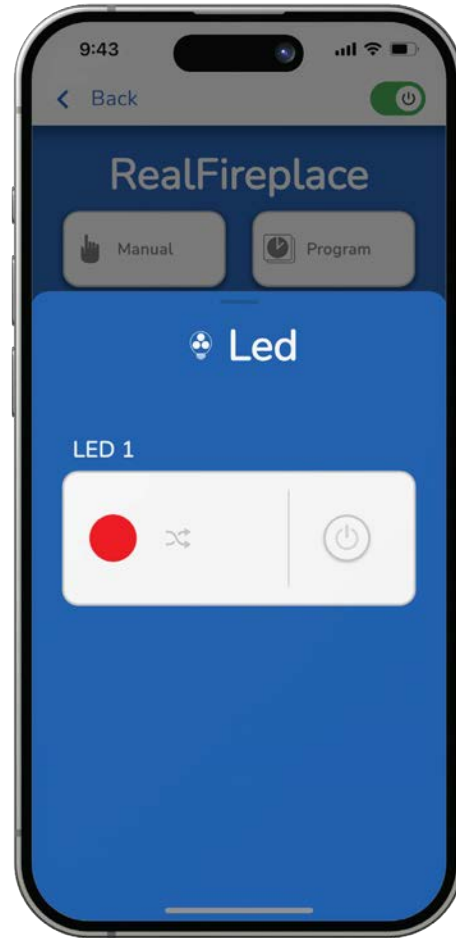
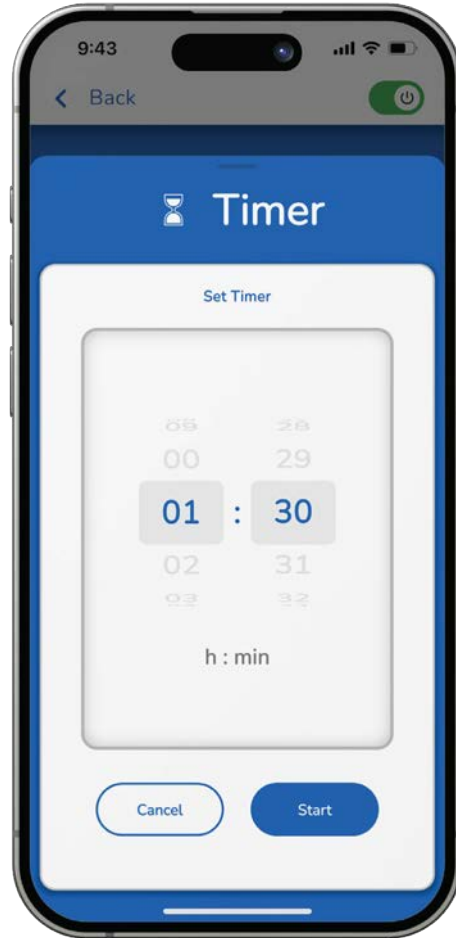
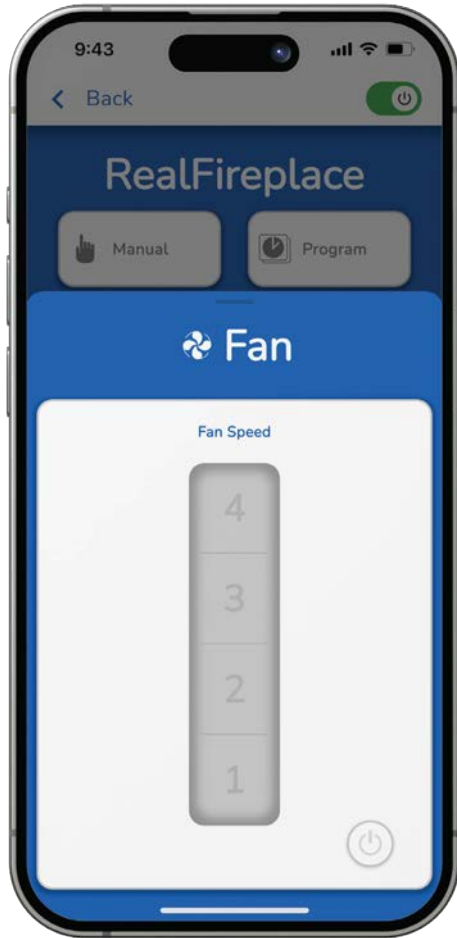
1. Touch **"Settings"** button.
2. Touch **"Name & Icon"** button.
3. Touch current name to change the name of the fireplace.
4. Touch the desired fireplace icon to match the name of the fireplace.



MAIN FUNCTIONS



Valor[®] 10 – Initial App Set-up



FREQUENT QUESTIONS

- The Valor10 app is compatible with Apple iOS and Google Android smart phones and tablets.
- The Valor10 app supports Apple iOS 10.0 or higher and Android 10.0 or higher.
- Storage for Valor10 app is 61 MB for Apple/iOS and 19 MB for Android.
- Valor10 app can be installed on any number of smart devices.
- The Valor10 app is stored locally on the smart device.
- Valor10 app does not work on PC or Mac computers.
- An Internet connection is necessary for the Valor10 app to control fire.
- The Valor10 app can control up to 8 gas fires. Each fire requires a separate Valor10 Wi-Fi box.
- Valor10 app updates have no additional charge and are available via the Apple App Store or Google Play.
- New versions of the Valor10 app are announced and available in the app store. You will be notified in the app itself of updates available for the Valor10 Wi-Fi box.

